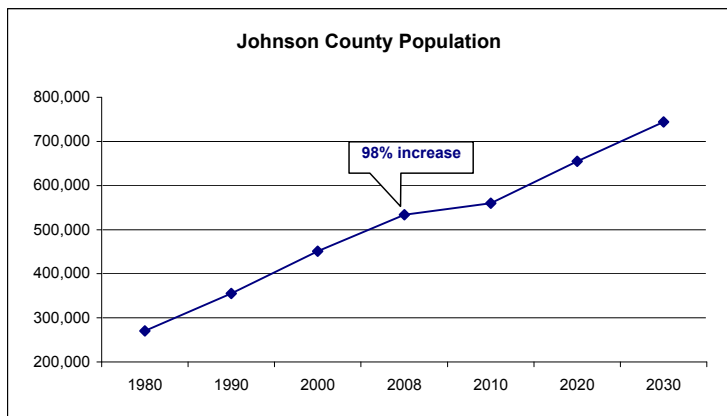




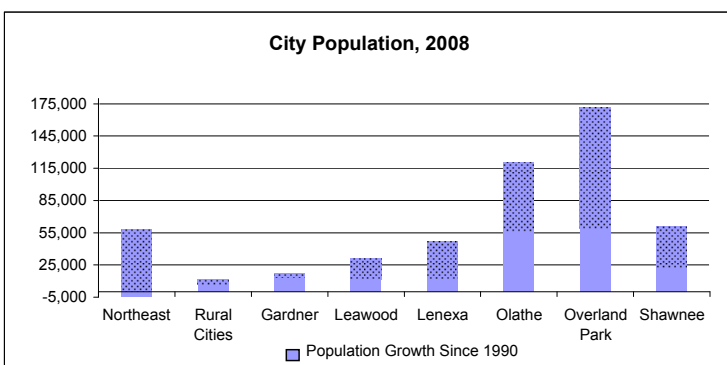
How Johnson County is Changing

The last 30 years have brought significant changes to Johnson County, Kansas. Here are key trends that suggest challenges and opportunities for the delivery of human services in the years ahead.



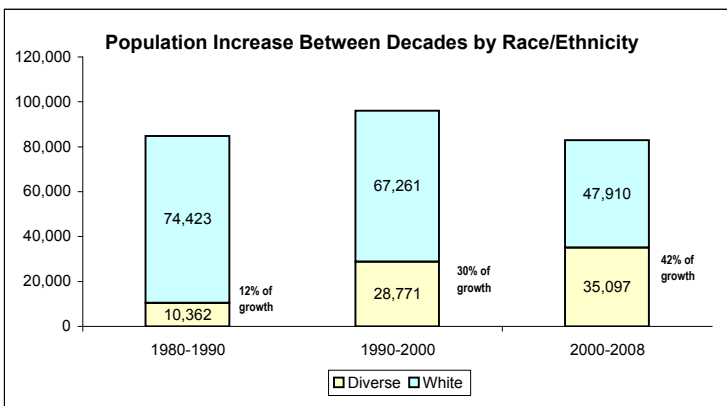
We're Growing

Since 1980, Johnson County has nearly doubled in number of residents. By 2030, the county is expected to reach nearly 750,000.



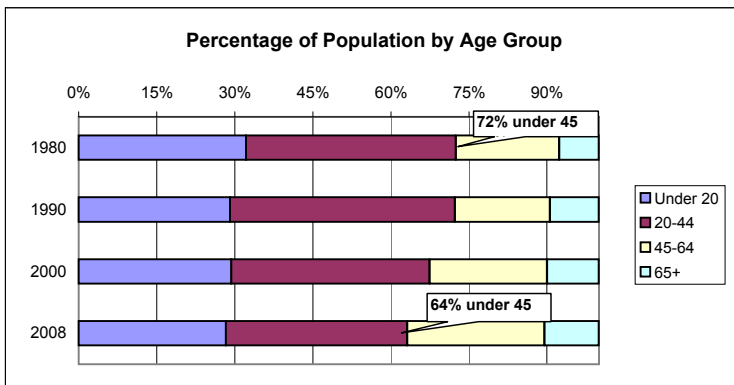
We're Spreading Out

In the past 20 years, growth has been greater in the areas farthest from the Northeast corridor. While the Northeast corridor's population declined by 7% since 1990, outlying areas have experienced significant growth. Gardner was the fastest growing city, with a 300% increase, followed by DeSoto (129%), and Spring Hill (102%). Olathe increased 88%.



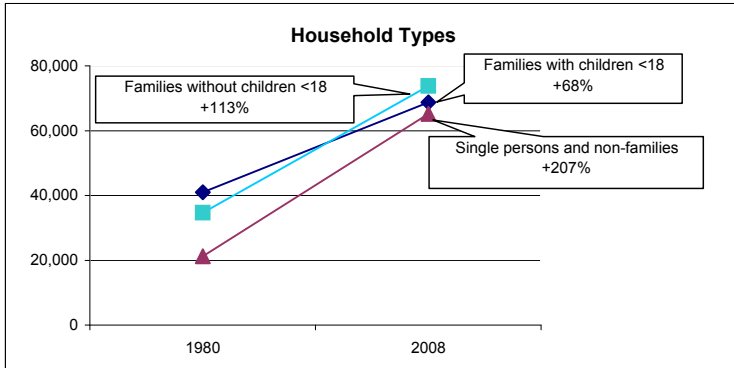
We're Becoming More Diverse

Increasingly, growth in Johnson County is due to people who are racially and ethnically diverse (primarily African-American, Asian and Latino/Hispanic). Between 1980 and 1990, 12% of the population growth was due to diverse populations. By 2000-2008, 42% of the population growth was due to diverse populations. Overall, diversity of the population has gone from 4%, or 10,500 people, in 1980 to 16%, or 85,000 people, in 2008.



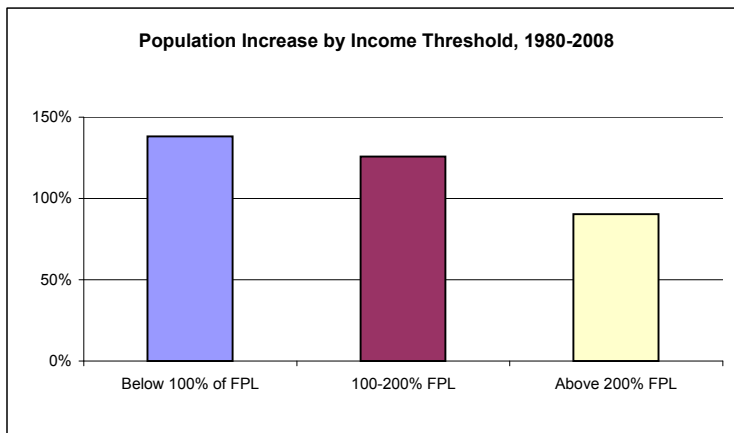
We're Getting Older

During the 1980s and 1990s, nearly 75% of the population was under age 45. With the aging of the baby boomers, by 2008 64% of the population was under age 45. Currently senior adults (65+) account for one in 10 residents, but will represent an increasing portion of the population over the next two decades.



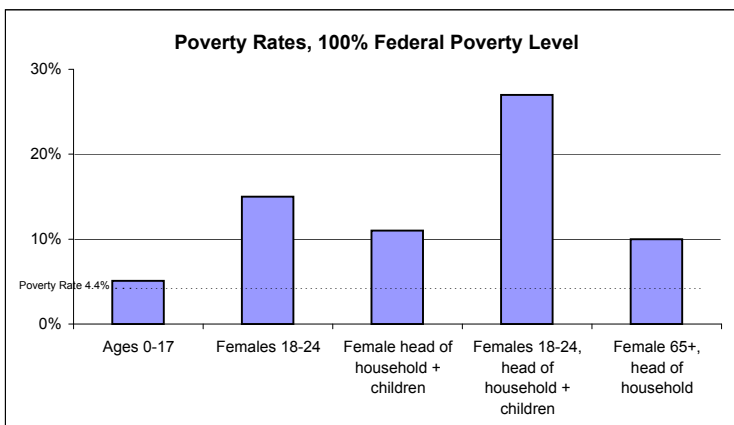
Family Life is Changing

Families with children under 18 (two-parent and single parent) is no longer the predominant household type in the county. The "empty-nester" family is the most prevalent type of household, while single person and non-family households are the fastest growing. The "traditional" two-parent family with school-age children now accounts for about one household in four, down from one in three in 1980. More children, 17%, are living in a single-parent home, up from 13% in 1980.



More of Us Are Struggling Financially

While the county's population nearly doubled between 1980 and 2008, the growth rate was not the same at every income level. The increase in population below 100% FPL (federal poverty level) was 138%; between 100 and 200% FPL the population increased 125%. The population above 200% FPL grew 90%. (In 2008, 200% FPL was \$35,200 for a family of 3.) In 2008, 14% of the county population, or nearly 75,000 people, lived in a household with income below 200% FPL, an increase of more than 30,000 people since 1980.



Women and Children are Most Vulnerable

Various indicators point to greater risk of poverty for women and children. While the overall poverty rate is 4.4%, children (0-17) have a slightly higher rate of 5.1%. Females ages 18-24 have a 15% poverty rate, the highest of any group based on sex and age. Young, single mothers are at greatest risk, with a 27% poverty rate. For all female headed households with children, the poverty rate is 11%. Female senior adults who are head of household have a 10% poverty rate.